

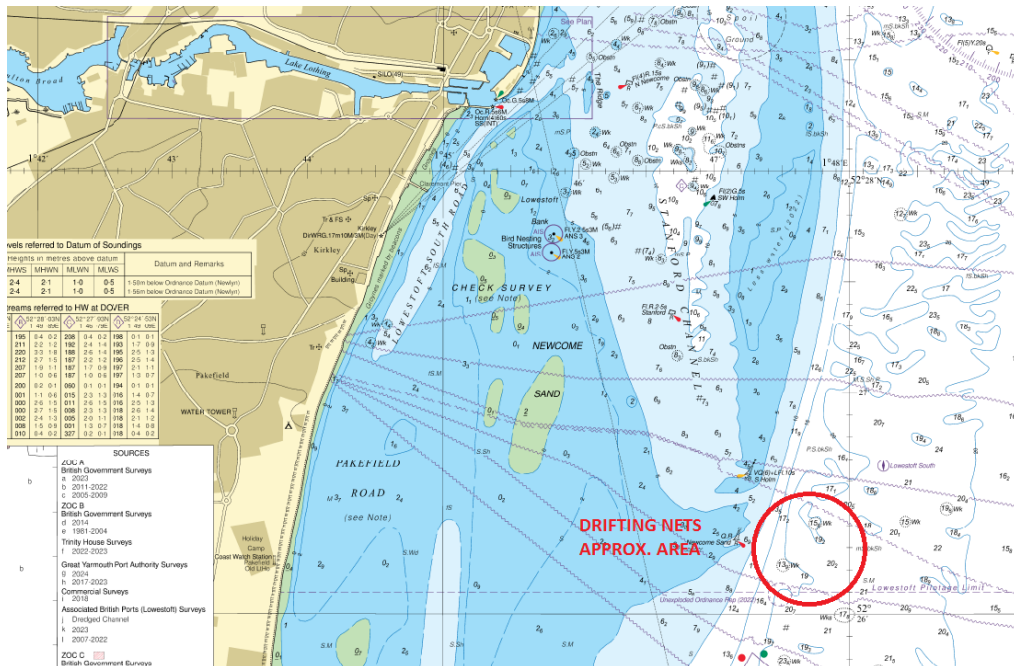
NOTICE TO MARINERS Lowestoft Southern Approaches – Confirmed Report of Drifting Fishing Gear

UTC BST

Mariners and port users are advised that a sighting of drifting fishing gear – nets/lines and 4 x floats, has been confirmed in the vicinity of the Newcombe Sand Buoy, at the Southern entrance to the Stanford Channel.

Last confirmed sighting of the fishing gear was at 1700hrs, in approx. position 52° 26.2'N, 01° 47.5'E. The nets are weighted but are not anchored in position, so will drift with sea/wind/tidal influence.

The fishing gear represents a navigational hazard to vessels transiting this area. Mariners are requested to navigate with caution in this vicinity, and to maintain a good lookout. Please report any sightings of the gear to Lowestoft Port Control on VHF Ch14.



Approx area of fishing gear

Fishermen with gear in this vicinity are requested to check that their nets/lines are accounted for, and to report to Lowestoft Port Control if the gear is believed to be theirs, or to report if it has been recovered.

Please contact Lowestoft Port Control, VHF Ch14, Tel. 01502 572286 (Option 3) if further information is required.

Divisional Harbour Master East Anglia

12 July 2024

Notice to Mariners Currently in Force:

2006 No.5 **2007** No.13 **2009** No.19 **2011** No.7, No.10 **2012** No.3, **2013** No.17, No.19, **2015** No.24
2016 No.12 **2017** No.5, No.22, No.24, No.32 **2019** No.18 **2020** No.17, No.24, No.26, No.29, No.47,
No.50, **2021** No.40, No.51, No.54, **2022** No.2, No.25, No.26, **2023** No.1, No.50, No.55 **2024** No.1,
No.13, No.24, No.27, No.31, No.32, No.33

**Lowestoft | Wales & Short Sea Ports | Associated British Ports| Lowestoft | Station Square |
Lowestoft | NR32 1BA | +44 (0) 1502 572286**