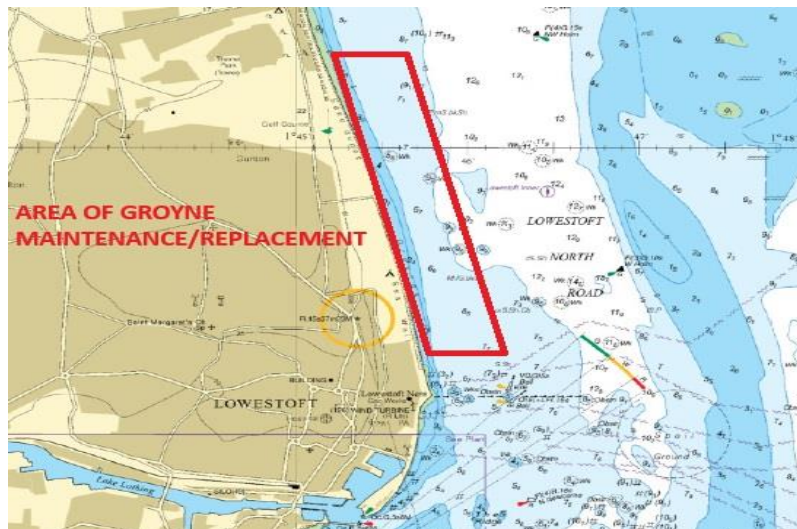


**NOTICE TO MARINERS**  
**Lowestoft Northern Coastline – Sea Defence/Groyne**  
**Maintenance and Renewal**

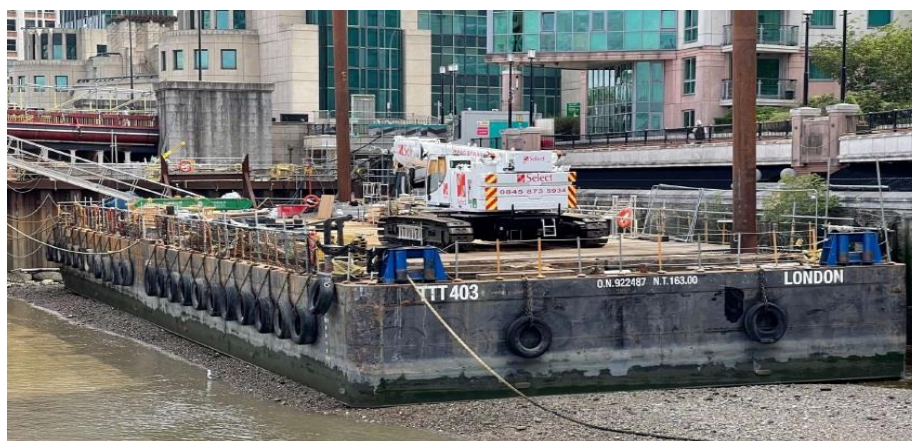
UTC ☐ BST ☒

Mariners and Port Users are advised that works are scheduled to commence on the Sea Defence Groyne Piling and Navigational Aids on the coastline North of Lowestoft, vicinity of Gunton – approx. works area as per attached chart extract.

Timing of works – from Monday 18<sup>th</sup> August, until approx. 29<sup>th</sup> August. Period of works may extend beyond 29<sup>th</sup> August as will be subject to weather and operational delays.



Works will be undertaken from pontoon barge TTT403 – dimensions 50m x 14m. Works supported by Multi Cat Jenny D.



TTT403



Jenny D

Work locations will be prioritised subject to working weather 'windows' available. When working the barge will be moored very close inshore. When not working the barge will be moored up to 250m offshore from the works area. At night the barge will display an anchor light and will be illuminated by low level deck lighting.

Mariners are requested to navigate with caution in this area, particularly when navigating close inshore in hours of darkness.

Please contact Lowestoft Port Control, VHF Ch14, Tel. 01502 572286 (Option 3) if further information is required.

### **Divisional Harbour Master East Anglia**

**15<sup>th</sup> August 2025**

#### **Notice to Mariners Currently in Force:**

**2006** No.5 **2007** No.13 **2009** No.19 **2011** No.7, No.10 **2012** No.3, **2013** No.19, **2015** No.24 **2016** No.12 **2017** No.22, No.24, **2019** No.18 **2020** No.26, No.29, No.47, No.50, **2021** No.51, **2022** No.25 **2024** No. 42, No. 52, No. 53a, No. 54 **2025** No.01, No.04, No.10, No.11, No.13a, No.15, No.19, No.26d, No.28, No.29, No.30

**Lowestoft | Wales & Short Sea Ports | Associated British Ports| Lowestoft | Station Square | Lowestoft | NR32 1BA | +44 (0) 1502 572286**