

NOTICE TO MARINERS

MV Reimerswaal – Ipswich Power Station Berth

UTC BST

Mariners are advised of a new vessel arriving into the Port of Ipswich.

The MV Reimerswaal will be berthing off of Ipswich Power Station berth.

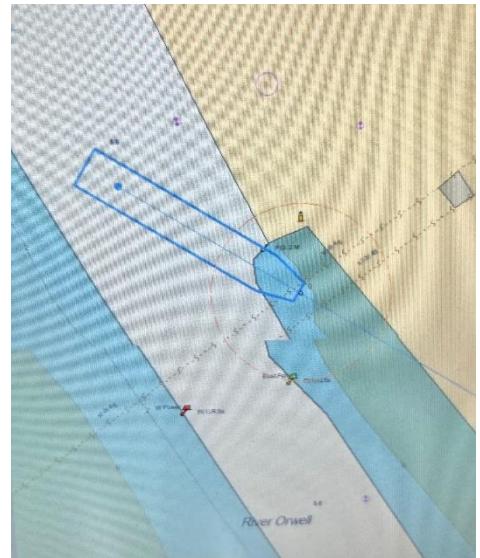
The vessel will berth across the main channel during discharge operations for approximately 2 hours.

During the discharge the port will be closed for commercial movements.

Leisure craft are requested to pass well clear.

The commercial river traffic will be managed by ONS, mariners requiring more information can do so by contacting: -

Orwell Navigation Service on VHF Ch 68



Divisional Assistant Harbour Master East Anglia

28 May 2024

Notice to Mariners Currently in Force:

2004:11 2005: 5 2006: 10 2008:8, 9 2010: 3, 8 2019:3,10 2022: 6 2023: 19, 29, 30, 32, 2024: 01,09,17,18